

Fascette a banda piena DIN 3017 W1 W2 W4 DIN 3017 Hose clamp full band material W1 W2 W4	Pag.	2 - 5
Fascette a banda perforata DIN 3017 W2 W4 DIN 3017 Hose clamp with perforated band material W2 W4	Pag.	6 - 10
Fascetta metrica W2 W4 Metric clamp W2 W4		11
Collari stringitubo con bullone W1 W4 T Bolt clamp W1 W4		12 - 14
Mini clamp W1 - Fascette ad orecchie W1 Mini clamp W1 - Two ear clamp W1		15 - 16
Fascette speciali Special clamps		17
Fascette nylon high quality Nylon high quality clamp		18
Condizioni generali di vendita General conditions of sale		19 - 20

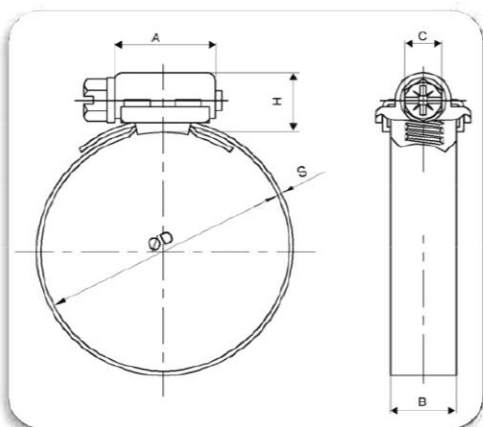
FASCETTE BANDA PIENA DIN 3017

HOSE CLAMP FULL BAND DIN 3017

Le fascette a banda piena da 9 e 12 mm e sono realizzate secondo la normativa DIN 3017. La vite di regolazione è racchiusa in un particolare cassetto, il quale assicura una forte tenuta con basse coppie di serraggio, la banda ha bordi arrotondati per evitare il danneggiamento della tubazione durante il serraggio.

The clamps a full band from 9 to 12 mm and are made according to DIN 3017.

The regulation screw is enclosed in a particular housing, which ensures a strong seal with low torques, the band has rounded edges to prevent damage to the tube during the tightening.



Caratteristiche dei materiali:

Materials characteristics:

W1

Banda e cassetto e vite in acciaio zincato *

W1

Band, housing and screw in galvanized steel *

W2

Banda e cassetto in acciaio INOX 430, vite in acciaio zincato *

W2

Band and housing in stainless steel INOX 430, screw in galvanized steel *

W4

Banda, cassetto e vite acciaio INOX 304

W4

Band, housing and screw in stainless steel INOX 304

* Zincatura bianca esente cromo EU RoHS

* white zinc plated free chromium EU RoHS

Campi di impiego:

Field of use:

W1

- Agricoltura
- Automotive
- Elettrodomestici
- Termoidraulica
- Ferramenta
- Industria

W1

- Agriculture
- Automotive
- Home appliances
- Thermoidraulic
- Hardware
- Industry

W2

W4

- Industria petrolifera
- Industria navale
- Industria Alimentare
- Industria chimica

W4

- Petroleum industry
- Marine industry
- Food industry
- Chemical industry

FASCETTE BANDA PIENA DIN 3017

HOSE CLAMP FULL BAND DIN 3017

Codice Code	Diametro Diameter	Banda Band	Vite Screw	Serraggio Torque	Imballo Box	Prezzo € Pz
	mm	mm	mm	Nm	Pz/pcs	€/pc
FAW10908	8 - 12	9	7	≥ 3,5	100	0,880
FAW10910	10 - 16	9	7	≥ 3,5	100	0,880
FAW10912	12 - 20	9	7	≥ 3,5	100	0,898
FAW10916	16 - 25	9	7	≥ 3,5	100	0,935
FAW10920	20 - 32	9	7	≥ 3,5	100	1,026
FAW10925	25 - 40	9	7	≥ 3,5	100	1,118
FAW10932	32 - 50	9	7	≥ 3,5	50	1,151
FAW10940	40 - 60	9	7	≥ 3,5	50	1,279
FAW10950	50 - 70	9	7	≥ 3,5	50	1,334
FAW10960	60 - 80	9	7	≥ 3,5	50	1,389
FAW10970	70 - 90	9	7	≥ 3,5	25	1,551

FAW112016	16 - 25	12	7	≥ 5,0	100	1,188
FAW112020	20 - 32	12	7	≥ 5,0	100	1,262
FAW112025	25 - 40	12	7	≥ 5,0	100	1,352
FAW112032	32 - 50	12	7	≥ 5,0	50	1,498
FAW112040	40 - 60	12	7	≥ 5,0	50	1,572
FAW112050	50 - 70	12	7	≥ 5,0	50	1,700
FAW112060	60 - 80	12	7	≥ 5,0	50	1,737
FAW112070	70 - 90	12	7	≥ 5,0	25	1,872
FAW112080	80 - 100	12	7	≥ 5,0	25	1,963
FAW112090	90 - 110	12	7	≥ 5,0	25	2,053
FAW112100	100 - 120	12	7	≥ 5,0	25	2,139
FAW112110	110 - 130	12	7	≥ 5,0	25	2,346
FAW112120	120 - 140	12	7	≥ 5,0	25	2,496
FAW112130	130 - 150	12	7	≥ 5,0	25	2,967
FAW112140	140 - 160	12	7	≥ 5,0	25	3,046
FAW112150	150 - 170	12	7	≥ 5,0	25	3,114
FAW112160	160 - 180	12	7	≥ 5,0	25	3,340
FAW112170	170 - 190	12	7	≥ 5,0	25	3,418
FAW112180	180 - 200	12	7	≥ 5,0	25	3,655
FAW112200	200 - 220	12	7	≥ 5,0	25	3,802
FAW112210	210 - 230	12	7	≥ 5,0	25	3,870
FAW112230	230 - 250	12	7	≥ 5,0	25	4,039
FAW112250	250 - 270	12	7	≥ 5,0	25	4,344
FAW112270	270 - 290	12	7	≥ 5,0	25	4,513
FAW112290	290 - 310	12	7	≥ 5,0	25	5,155

W1



FASCETTE BANDA PIENA DIN 3017

HOSE CLAMP FULL BAND DIN 3017

Codice Code	Diametro Diameter	Banda Band	Vite Screw	Serraggio Torque	Imballo Box	Prezzo € Pz
	mm	mm	mm	Nm	Pz/pcs	€/pc
FAW20507	7 - 11	5	7	≥ 3,8	100	1,623
FAW20908	8 - 12	9	7	≥ 5,0	100	1,02
FAW20910	10 - 16	9	7	≥ 5,0	100	1,02
FAW20912	12 - 20	9	7	≥ 5,0	100	1,038
FAW20916	16 - 25	9	7	≥ 5,0	100	1,076
FAW20920	20 - 32	9	7	≥ 5,0	100	1,24
FAW20925	25 - 40	9	7	≥ 5,0	100	1,313
FAW20932	32 - 50	9	7	≥ 5,0	50	1,411
FAW20940	40 - 60	9	7	≥ 5,0	50	1,567
FAW20950	50 - 70	9	7	≥ 5,0	50	1,626
FAW20960	60 - 80	9	7	≥ 5,0	50	1,699
FAW20970	70 - 90	9	7	≥ 5,0	50	1,779

FAW212016	16 - 25	12	7	≥ 6,5	100	1,370
FAW212020	20 - 32	12	7	≥ 6,5	100	1,517
FAW212025	25 - 40	12	7	≥ 6,5	100	1,608
FAW212032	32 - 50	12	7	≥ 6,5	50	1,755
FAW212040	40 - 60	12	7	≥ 6,5	50	1,883
FAW212050	50 - 70	12	7	≥ 6,5	50	2,010
FAW212060	60 - 80	12	7	≥ 6,5	50	2,084
FAW212070	70 - 90	12	7	≥ 6,5	25	2,290
FAW212080	80 - 100	12	7	≥ 6,5	25	2,448
FAW212090	90 - 110	12	7	≥ 6,5	25	2,559
FAW212100	100 - 120	12	7	≥ 6,5	25	2,668
FAW212110	110 - 130	12	7	≥ 6,5	25	2,922
FAW212120	120 - 140	12	7	≥ 6,5	25	3,035
FAW212130	130 - 150	12	7	≥ 6,5	25	3,655
FAW212140	140 - 160	12	7	≥ 6,5	25	3,757
FAW212150	150 - 170	12	7	≥ 6,5	25	3,858
FAW212160	160 - 180	12	7	≥ 6,5	25	4,129
FAW212170	170 - 190	12	7	≥ 6,5	25	4,242
FAW212180	180 - 200	12	7	≥ 6,5	25	4,557

W2



FASCETTE BANDA PIENA DIN 3017

HOSE CLAMP FULL BAND DIN 3017

Codice Code	Diametro Diameter	Banda Band	Vite Screw	Serraggio Torque	Imballo Box	Prezzo € Pz
	mm	mm	mm	Nm	Pz/pcs	€/pc
FAW40908	8 - 12	9	7	≥ 5,0	100	1,919
FAW40910	10 - 16	9	7	≥ 5,0	100	1,975
FAW40912	12 - 20	9	7	≥ 5,0	100	1,992
FAW40916	16 - 25	9	7	≥ 5,0	100	2,053
FAW40920	20 - 32	9	7	≥ 5,0	100	2,336
FAW40925	25 - 40	9	7	≥ 5,0	100	2,482
FAW40932	32 - 50	9	7	≥ 5,0	50	2,685
FAW40940	40 - 60	9	7	≥ 5,0	50	2,832
FAW40950	50 - 70	9	7	≥ 5,0	50	3,000

W4



FAW412016	16 - 25	12	7	≥ 6,5	100	2,561
FAW412020	20 - 32	12	7	≥ 6,5	100	2,707
FAW412025	25 - 40	12	7	≥ 6,5	100	2,906
FAW412032	32 - 50	12	7	≥ 6,5	50	3,159
FAW412040	40 - 60	12	7	≥ 6,5	50	3,384
FAW412050	50 - 70	12	7	≥ 6,5	50	3,621
FAW412060	60 - 80	12	7	≥ 6,5	50	4,016
FAW412070	70 - 90	12	7	≥ 6,5	25	4,355
FAW412080	80 - 100	12	7	≥ 6,5	25	4,569
FAW412090	90 - 110	12	7	≥ 6,5	25	4,794
FAW412100	100 - 120	12	7	≥ 6,5	25	5,009
FAW412110	110 - 130	12	7	≥ 6,5	25	5,066
FAW412120	120 - 140	12	7	≥ 6,5	25	5,810
FAW412130	130 - 150	12	7	≥ 6,5	25	6,499
FAW412140	140 - 160	12	7	≥ 6,5	25	6,713
FAW412150	150 - 170	12	7	≥ 6,5	25	6,916
FAW412160	160 - 180	12	7	≥ 6,5	25	7,299
FAW412170	170 - 190	12	7	≥ 6,5	25	7,536
FAW412180	180 - 200	12	7	≥ 6,5	25	8,122

FASCETTE BANDA PERFORATA

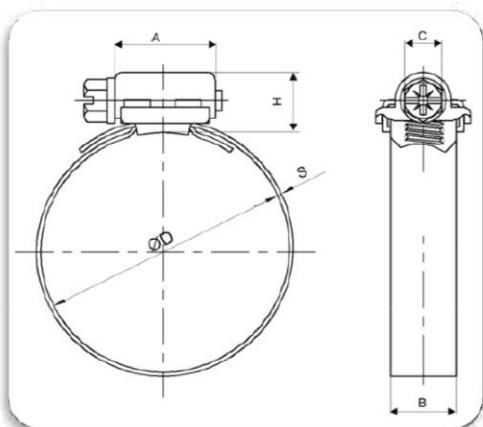
HOSE CLAMP PERFORATED BAND

Le fascette a banda perforata da 8 e 113 mm e sono realizzate secondo la normativa DIN 3017.

La vite di regolazione è racchiusa in un particolare cassetto, il quale assicura una forte tenuta con basse coppie di serraggio, la banda ha bordi arrotondati per evitare il danneggiamento della tubazione durante il serraggio.

The clamps a perforated band from 8 to 13 mm and are made according to DIN 3017.

The regulation screw is enclosed in a particular housing, which ensures a strong seal with low torques, the band has rounded edges to prevent damage to the tube during the tightening.



Caratteristiche dei materiali:

Materials characteristics:

W2

Banda e cassetto in acciaio INOX 430, vite in acciaio zincato *

W2

Band and housing in stainless steel INOX 430, screw in galvanized steel *

W4

Banda, cassetto e vite acciaio INOX 304

W4

Band, housing and screw in stainless steel INOX 304

* Zincatura bianca esente cromo EU RoHS

* white zinc plated free chromium EU RoHS

Campi di impiego:

Field of use:

W2

- Agricoltura
- Automotive
- Elettrodomestici
- Termoidraulica
- Ferramenta
- Industria

W2

- Agriculture
- Automotive
- Home appliances
- Thermoidraulic
- Hardware
- Industry

W4

- Industria petrolifera
- Industria navale
- Industria Alimentare
- Industria chimica

W4

- Petroleum industry
- Marine industry
- Food industry
- Chemical industry

FASCETTE BANDA PERFORATA

HOSE CLAMP PERFORATED BAND

Codice <i>Code</i>	Diametro <i>Diameter</i>	Banda <i>Band</i>	Vite <i>Screw</i>	Serraggio <i>Torque</i>	Imballo <i>Box</i>	Prezzo <i>€ Pz</i>
	mm	mm	mm	Nm	Pz/pcs	€/pc
FAW208008	8 - 12	8	7	4	100	1,132
FAW208010	10 - 16	8	7	4	100	1,167
FAW208012	12 - 22	8	7	4	100	1,205
FAW208014	14 - 24	8	7	4	100	1,260
FAW208016	16 - 28	8	7	4	100	1,297
FAW208020	20 - 32	8	7	4	100	1,354
FAW208023	23 - 36	8	7	4	50	1,390
FAW208025	25 - 45	8	7	4	50	1,557
FAW208032	32 - 52	8	7	4	50	1,631
FAW208040	40 - 60	8	7	4	50	1,704
FAW208047	47 - 67	8	7	4	25	1,799
FAW208060	60 - 82	8	7	4	25	1,872
FAW208077	77 - 97	8	7	4	25	2,002
FAW208090	90 - 112	8	7	4	25	2,187
FAW208107	107 - 127	8	7	4	25	2,191
FAW208122	122 - 142	8	7	4	25	2,207
FAW208137	137 - 157	8	7	4	25	2,223
FAW208152	152 - 172	8	7	4	25	2,354
FAW208167	167 - 187	8	7	4	25	2,464
FAW208182	182 - 202	8	7	4	25	2,630
FAW208197	197 - 217	8	7	4	25	2,816
FAW208212	212 - 232	8	7	4	25	3,039
FAW208227	227 - 247	8	7	4	25	3,225
FAW208242	242 - 262	8	7	4	25	3,391

W2 - 8



FASCETTE BANDA PERFORATA

HOSE CLAMP PERFORATED BAND

Codice Code	Diametro Diameter	Banda Band	Vite Screw	Serraggio Torque	Imballo Box	Prezzo € Pz
	mm	mm	mm	Nm	Pz/pcs	€/pc
FAW213014	14 - 22	13	7	6	50	2,223
FAW213016	16 - 28	13	7	6	50	2,298
FAW213023	23 - 36	13	7	6	50	2,464
FAW213025	25 - 45	13	7	6	50	2,577
FAW213032	32 - 52	13	7	6	50	2,743
FAW213040	40 - 60	13	7	6	25	3,021
FAW213047	47 - 67	13	7	6	25	3,095
FAW213060	60 - 82	13	7	6	25	3,410
FAW213077	77 - 97	13	7	6	25	3,651
FAW213090	90 - 112	13	7	6	25	3,927
FAW213107	107 - 127	13	7	6	25	3,941
FAW213120	120 - 142	13	7	6	25	3,965
FAW213137	137 - 157	13	7	6	25	4,262
FAW213150	150 - 172	13	7	6	25	4,557
FAW213167	167 - 187	13	7	6	25	4,874
FAW213180	180 - 202	13	7	6	25	5,152
FAW213197	197 - 217	13	7	6	25	5,448
FAW213212	212 - 232	13	7	6	25	5,764
FAW213227	227 - 247	13	7	6	25	6,059
FAW213242	242 - 262	13	7	6	25	6,356

W2 - 13



FASCETTE BANDA PERFORATA

HOSE CLAMP PERFORATED BAND

W4 - 8



Codice Code	Diametro Diameter	Banda Band	Vite Screw	Serraggio Torque	Imballo Box	Prezzo € Pz
	mm	mm	mm	Nm	Pz/pcs	€/pc
FAW408008	8 - 12	8	7	4	100	1,561
FAW408010	10 - 16	8	7	4	100	1,619
FAW408012	12 - 22	8	7	4	100	1,658
FAW408014	14 - 24	8	7	4	100	1,697
FAW408016	16 - 28	8	7	4	100	1,755
FAW408020	20 - 32	8	7	4	100	1,794
FAW408023	23 - 36	8	7	4	50	1,853
FAW408025	25 - 45	8	7	4	50	2,009
FAW408032	32 - 52	8	7	4	50	2,107
FAW408040	40 - 60	8	7	4	50	2,203
FAW408047	47 - 67	8	7	4	25	2,301
FAW408060	60 - 82	8	7	4	25	2,379
FAW408077	77 - 97	8	7	4	25	2,536
FAW408090	90 - 112	8	7	4	25	2,673
FAW408107	107 - 127	8	7	4	25	2,676
FAW408122	122 - 142	8	7	4	25	2,681
FAW408137	137 - 157	8	7	4	25	2,691
FAW408152	152 - 172	8	7	4	25	2,808
FAW408167	167 - 187	8	7	4	25	2,926
FAW408182	182 - 202	8	7	4	25	3,121
FAW408197	197 - 217	8	7	4	25	3,315
FAW408212	212 - 232	8	7	4	25	3,531
FAW408227	227 - 247	8	7	4	25	3,744
FAW408242	242 - 262	8	7	4	25	3,959

FASCETTE BANDA PERFORATA

HOSE CLAMP PERFORATED BAND

Codice Code	Diametro Diameter	Banda Band	Vite Screw	Serraggio Torque	Imballo Box	Prezzo € Pz
	mm	mm	mm	Nm	Pz/pcs	€/pc
FAW413014	14 - 22	13	7	6	50	3,335
FAW413016	16 - 28	13	7	6	50	3,413
FAW413023	23 - 36	13	7	6	50	3,531
FAW413025	25 - 45	13	7	6	50	3,881
FAW413032	32 - 52	13	7	6	50	4,038
FAW413040	40 - 60	13	7	6	25	4,212
FAW413047	47 - 67	13	7	6	25	4,428
FAW413060	60 - 82	13	7	6	25	4,739
FAW413077	77 - 97	13	7	6	25	4,915
FAW413090	90 - 112	13	7	6	25	5,149
FAW413107	107 - 127	13	7	6	25	5,157
FAW413120	120 - 142	13	7	6	25	5,193
FAW413137	137 - 157	13	7	6	25	5,246
FAW413150	150 - 172	13	7	6	25	5,695
FAW413167	167 - 187	13	7	6	25	6,182
FAW413180	180 - 202	13	7	6	25	6,650
FAW413197	197 - 217	13	7	6	25	7,119
FAW413212	212 - 232	13	7	6	25	7,606
FAW413227	227 - 247	13	7	6	25	8,074
FAW413242	242 - 262	13	7	6	25	8,542

W4 - 13



FASCETTA METRICA W2 - W4

METRIC CLAMP W2 - W4

Fascetta metrica a banda perforata disponibile in W2 e W4 da 8 e 14 mm (30 mt) , in W2 e W4 da 8 e 14 mm (3 mt + carrelli) , La banda ha bordi arrotondati per evitare il danneggiamento della tubazione durante il serraggio.

Disponibile anche in W2 - W4 banda piena 9mm

Metric clamps with perforated band available in W2 and W4, 8 and 14mm width (30 mt) or W2 and W4, 8 and 14 mm width(3 mt + Housings)

The band has rounded edges to prevent damage to the tube during the tightening.

Available also in W2-W4 full band 9mm



Caratteristiche dei materiali:

W2

Banda e cassetto in acciaio INOX 430, vite in acciaio zincato *

W4

Banda, cassetto e vite acciaio INOX 304

Materials characteristics:

W2

Band and housing in stainless steel INOX 430, screw in galvanized steel *

W4

Band, housing and screw in stainless steel INOX 304

* Zincatura bianca esente cromo EU RoHS

* white zinc plated free chromium EU RoHS

Codice Code		Tipo Type	Banda Band	Carrello Housing	Imballo Box	Prezzo € Pz
		mm	mm	n°	Mt/Mt	€/pc
FAWMETRICAW208		W2	8	-	30	413,655
FAWMETRICAW209		W2	9 Piena	-	30	125,350
FAWMETRICAW214		W2	14	-	30	423,200
FAWMETRICAW408		W4	8	-	30	427,110
FAWMETRICAW409		W4	9 Piena	-	30	227,700
FAWMETRICAW414		W4	14	-	30	471,500
FAWMETRICAKITW208		W2	8	8	3	41,446
FAWMETRICAKITW214		W2	14	6	3	66,436
FAWMETRICAKITW408		W4	8	8	3	48,760
FAWMETRICAKITW414		W4	14	6	3	74,359

CARRELLI / HOUSING

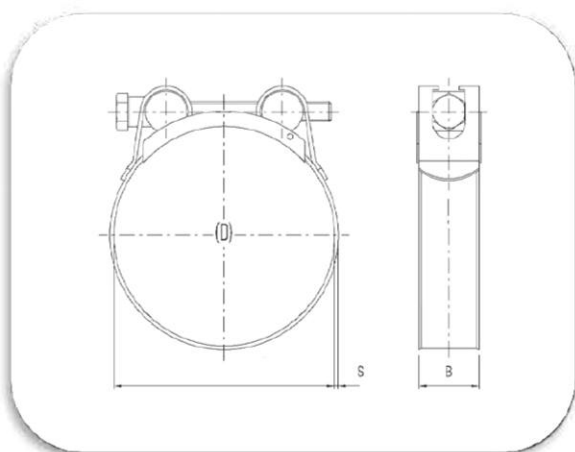
FAWMETRICACARW208	W2	8	-	50	1,921
FAWMETRICACARW408	W4	8	-	50	3,462
FAWMETRICACARW209	W2	9	-	50	2,312
FAWMETRICACARW409	W4	9	-	50	4,623
FAWMETRICACARW214	W2	14	-	50	4,037
FAWMETRICACARW414	W4	14	-	50	5,152

COLLARI STRINGITUBO CON BULLONE

T BOLT CLAMP

I collari stringitubo con bullone a banda piena sono realizzati secondo la Norma DIN 3017. Il bullone di chiusura assicura una forte tenuta con basse coppie di serraggio, la banda ha bordi arrotondati per evitare il danneggiamento della tubazione durante il serraggio.

T Bolt clamps a full band from 9 to 12 mm and are made according to DIN 3017. The locking bolt ensures a strong seal with low torques, the band has rounded edges to prevent damage to the tube during the tightening.



Caratteristiche dei materiali:

Materials characteristics:

W1

Banda e cassetto e vite in acciaio zincato *

W1

Band, housing and screw in galvanized steel *

W4

Banda, cassetto e vite acciaio INOX 304

W4

Band, housing and screw in stainless steel INOX 304

* Zincatura bianca esente cromo EU RoHS

* white zinc plated free chromium EU RoHS

Campi di impiego:

Field of use:

W1

- Agricoltura
- Automotive
- Elettrodomestici
- Termoidraulica
- Ferramenta
- Industria

W1

- Agriculture
- Automotive
- Home appliances
- Thermoidraulic
- Hardware
- Industry

W4

- Industria petrolifera
- Industria navale
- Industria Alimentare
- Industria chimica

W4

- Petroleum industry
- Marine industry
- Food industry
- Chemical industry

COLLARI STRINGITUBO CON BULLONE

T BOLT CLAMP

Codice Code	Diametro Diameter	Banda Band	Vite Screw	Serraggio Torque	Imballo Box	Prezzo € Pz
	mm	mm	mm	Nm	Pz/pcs	€/pc
FAWIND017	17—19	18 x 0,4	M5 X 40	≥ 5,0	200	3,098
FAWIND020	20—22	18 x 0,4	M5 X 40	≥ 5,0	200	3,133
FAWIND023	23—25	18 x 0,6	M5 X 40	≥ 5,0	200	3,149
FAWIND026	26—28	18 x 0,6	M5 X 40	≥ 5,0	200	3,183
FAWIND029	29—31	20 x 0,6	M6 X 50	≥ 8,0	200	3,716
FAWIND032	32—35	20 x 0,6	M6 X 50	≥ 8,0	200	3,765
FAWIND036	36—39	20 x 0,6	M6 X 50	≥ 8,0	200	3,848
FAWIND040	40—43	20 x 0,6	M6 X 50	≥ 8,0	200	3,899
FAWIND044	44—47	22 x 0,8	M6 X 60	≥ 8,0	100	4,698
FAWIND048	48—51	22 x 0,8	M6 X 60	≥ 8,0	100	4,799
FAWIND052	52—55	22 x 0,8	M6 X 60	≥ 8,0	100	4,899
FAWIND056	56—59	22 x 0,8	M6 X 60	≥ 8,0	100	4,965
FAWIND060	60—63	22 x 0,8	M6 X 60	≥ 8,0	100	5,047
FAWIND064	64—67	22 x 0,8	M8 X 75	≥ 25,0	100	6,239
FAWIND068	68—73	24 x 0,8	M8 X 75	≥ 25,0	100	7,73
FAWIND074	74—79	24 x 0,8	M8 X 75	≥ 25,0	100	7,95
FAWIND080	80—85	24 x 0,8	M8 X 75	≥ 25,0	100	8,132
FAWIND086	86—91	24 x 0,8	M8 X 75	≥ 25,0	100	8,351
FAWIND092	92—97	24 x 0,8	M8 X 75	≥ 25,0	100	8,57
FAWIND098	98—103	24 x 0,8	M8 X 80	≥ 25,0	100	8,937
FAWIND104	104—112	24 x 0,8	M8 X 80	≥ 25,0	50	9,209
FAWIND113	113—121	24 x 0,8	M8 X 80	≥ 25,0	50	9,447
FAWIND122	122—130	24 x 0,8	M8 X 80	≥ 25,0	50	9,776
FAWIND131	131—139	26 x 1	M10 X 105	≥ 50,0	50	12,579
FAWIND140	140—148	26 x 1	M10 X 106	≥ 50,0	50	12,85
FAWIND149	149—161	26 x 1	M10 X 107	≥ 50,0	50	13,651
FAWIND162	162—174	26 x 1	M10 X 108	≥ 50,0	25	15,343
FAWIND175	175—187	26 x 1	M10 X 109	≥ 50,0	25	15,749
FAWIND188	188—200	26 x 1	M10 X 110	≥ 50,0	25	16,189
FAWIND201	201—213	26 x 1	M10 X 111	≥ 50,0	25	16,573
FAWIND214	214—226	26 x 1	M10 X 112	≥ 50,0	25	17,204
FAWIND227	227—239	26 x 1	M10 X 113	≥ 50,0	25	17,938
FAWIND240	240—252	26 x 1	M10 X 114	≥ 50,0	20	18,344

W1



COLLARI STRINGITUBO CON BULLONE

T BOLT CLAMP

Codice Code	Diametro Diameter	Banda Band	Vite Screw	Serraggio Torque	Imballo Box	Prezzo € Pz
	mm	mm	mm	Nm	Pz/pcs	€/pc
FAWINDW4017	17—19	18 x 0,4	M5 X 40	≥ 5,0	200	10,015
FAWINDW4020	20—22	18 x 0,4	M5 X 40	≥ 5,0	200	10,171
FAWINDW4023	23—25	18 x 0,6	M5 X 40	≥ 5,0	200	10,305
FAWINDW4026	26—28	18 x 0,6	M5 X 40	≥ 5,0	200	10,478
FAWINDW4029	29—31	20 x 0,6	M6 X 50	≥ 8,0	200	13,092
FAWINDW4032	32—35	20 x 0,6	M6 X 50	≥ 8,0	200	13,299
FAWINDW4036	36—39	20 x 0,6	M6 X 50	≥ 8,0	200	13,503
FAWINDW4040	40—43	20 x 0,6	M6 X 50	≥ 8,0	200	13,69
FAWINDW4044	44—47	22 x 0,8	M6 X 60	≥ 8,0	100	14,579
FAWINDW4048	48—51	22 x 0,8	M6 X 60	≥ 8,0	100	14,921
FAWINDW4052	52—55	22 x 0,8	M6 X 60	≥ 8,0	100	15,263
FAWINDW4056	56—59	22 x 0,8	M6 X 60	≥ 8,0	100	15,57
FAWINDW4060	60—63	22 x 0,8	M6 X 60	≥ 8,0	100	15,913
FAWINDW4064	64—67	22 x 0,8	M8 X 75	≥ 15,0	100	16,618
FAWINDW4068	68—73	24 x 0,8	M8 X 75	≥ 25,0	100	20,468
FAWINDW4074	74—79	24 x 0,8	M8 X 75	≥ 25,0	100	20,966
FAWINDW4080	80—85	24 x 0,8	M8 X 75	≥ 25,0	100	21,43
FAWINDW4086	86—91	24 x 0,8	M8 X 75	≥ 25,0	100	21,911
FAWINDW4092	92—97	24 x 0,8	M8 X 75	≥ 25,0	100	22,41
FAWINDW4098	98—103	24 x 0,8	M8 X 80	≥ 25,0	100	22,892
FAWINDW4104	104—112	24 x 0,8	M8 X 80	≥ 25,0	50	23,39
FAWINDW4113	113—121	24 x 0,8	M8 X 80	≥ 25,0	50	23,838
FAWINDW4122	122—130	24 x 0,8	M8 X 80	≥ 25,0	50	24,336
FAWINDW4131	131—139	26 x 1	M10 X 105	≥ 50,0	50	33,435
FAWINDW4140	140—148	26 x 1	M10 X 106	≥ 50,0	50	33,985
FAWINDW4149	149—161	26 x 1	M10 X 107	≥ 50,0	50	34,776
FAWINDW4162	162—174	26 x 1	M10 X 108	≥ 50,0	25	35,602
FAWINDW4175	175—187	26 x 1	M10 X 109	≥ 50,0	25	38,525
FAWINDW4188	188—200	26 x 1	M10 X 110	≥ 50,0	25	39,333
FAWINDW4201	201—213	26 x 1	M10 X 111	≥ 50,0	25	40,142
FAWINDW4214	214—226	26 x 1	M10 X 112	≥ 50,0	25	40,968
FAWINDW4227	227—239	26 x 1	M10 X 113	≥ 50,0	25	42,051
FAWINDW4240	240—252	26 x 1	M10 X 114	≥ 50,0	20	42,567

W4

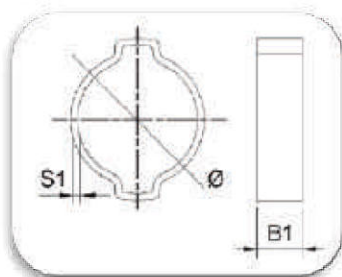
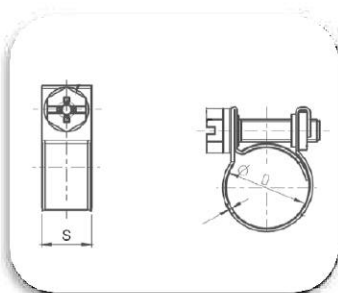


MINI CLAMP - FASCETTE AD ORECCHIE

MINI CLAMP - TWO EAR CLAMP

La fascetta Mini è indicata per tubi di piccolo diametro e dalle pareti sottili.

La fascetta ad orecchie è indicata per duraturi, economici e veloci serraggi di tubi di piccolo e medio diametro



The Mini Clamp is suitable for small diameter and thin-walled tubes.

The two ears clamp is suitable for durable, cheap and fast tightenings of small and medium diameter hoses



Caratteristiche dei materiali:

W1

Banda e cassetto e vite in acciaio zincato *

* Zincatura bianca esente cromo EU RoHS

Materials characteristics:

W1

Band, housing and screw in galvanized steel *

* white zinc plated free chromium EU RoHS

Campi di impiego:

W1

- Agricoltura
- Automotive
- Elettrodomestici
- Termoidraulica
- Ferramenta
- Industria

Field of use:

W1

- Agriculture
- Automotive
- Home appliances
- Thermoidraulic
- Hardware
- Industry

MINI CLAMP

MINI CLAMP

PI CLAMP by 

Codice Code	Diametro Diameter	Banda Band	Vite Screw	Serraggio Torque	Imballo Box	Prezzo € Pz
	mm	mm	mm	Nm	Pz/pcs	€/pc
FAWMINIW107	7-9	9	4	1	100	0,995
FAWMINIW108	8-10	9	4	1	100	0,995
FAWMINIW109	9-11	9	4	1	100	1,014
FAWMINIW110	10-12	9	4	1	100	1,014
FAWMINIW111	11-13	9	4	1	100	1,034
FAWMINIW112	12-14	9	4	1	100	1,034
FAWMINIW113	13-15	9	4	1	100	1,053
FAWMINIW114	14-16	9	4	1	100	1,053
FAWMINIW115	15-17	9	4	1	100	1,073
FAWMINIW116	16-18	9	4	1	100	1,073
FAWMINIW117	17-19	9	4	1	100	1,093
FAWMINIW118	18-20	9	4	1	100	1,093
FAWMINIW119	19-21	9	4	1	100	1,112
FAWMINIW120	20-22	9	4	1	100	1,112
FAWMINIW121	21-23	9	4	1	100	1,132
FAWMINIW122	22-24	9	4	1	100	1,132

W1



FASCETTE AD ORECCHIE

TWO EAR CLAMP

PI CLAMP by 

Codice Code	Diametro min Min Diameter	Diametro max Max Diameter	Banda Band	Imballo Box	Prezzo € Pz
	mm	mm	mm	Pz/pcs	€/pc
FAWORECW10507	5	7	6 x 0,6	100	0,683
FAWORECW10709	7	9	7 x 0,8	100	0,719
FAWORECW10911	9	11	7 x 0,8	100	0,744
FAWORECW11113	11	13	67 x 0,9	100	0,841
FAWORECW11315	13	15	7,5 x 1	100	0,963
FAWORECW11518	15	18	7,5 x 1,2	100	1,060
FAWORECW11720	17	20	7,5 x 1,2	100	1,158
FAWORECW12023	20	23	9 x 1,3	100	1,463
FAWORECW12125	21	25	9 x 1,4	100	1,487
FAWORECW12225	22	25	9 x 1,4	100	1,487
FAWORECW12327	23	27	9 x 1,4	100	1,585
FAWORECW12528	25	28	9 x 1,4	100	1,841
FAWORECW12831	28	31	9 x 1,4	50	2,011
FAWORECW13134	31	34	9 x 1,4	50	2,109
FAWORECW13437	34	37	9 x 1,4	50	2,194
FAWORECW13740	37	40	9x 1,4	50	2,268

W1



FASCETTE SPECIALI

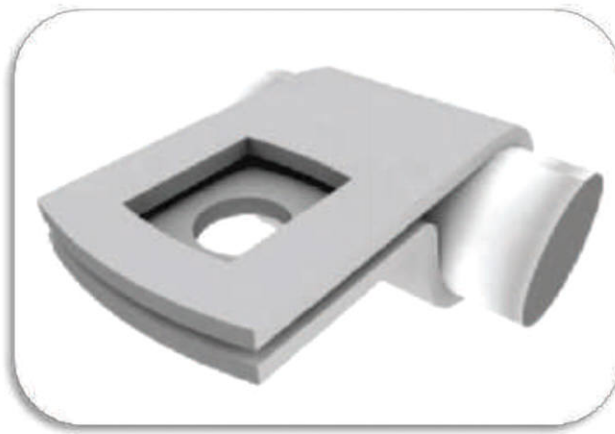
SPECIAL CLAMPS

Siamo in grado di produrre , a richiesta e per quantità, altre tipologie di fascette.

Contattateci

We are able to produce , on demand and in quantity , other type and size of clamps.

Please , send us request



FASCETTE NYLON HIGH QUALITY



MISURA	Larghezza	Ø Max utile	Tenuta minima	€/Buste 100pz
mm	mm	mm	Kg	
2.5*80	2,5	16	11	2,093
2.5*100		22		2,45
2.5*120		30		3,071
2.5*160		40		4,658
2.5*200		50		5,681
3.6*140	3,4	33	24	5,865
3.6*200		50		8,269
3.6*300		80		13,478
3.6*370		105		16,79
4.8*120	4,4	30	34	7,337
4.8*160		40		8,993
4.8*180		42		9,212
4.8*200		50		11,109
4.8*250		65		14,421
4.8*300		80		17,009
4.8*370		98		21,275
4.8*400		105		24,461
4.8*430		120		25,289
4.8*500		150		37,329
7.6*300	7,2	80	55	33,396
7.6*370		98		44,873
7.6*530		160		53,59
9*550	9,0	160	79	75,084
9*800		230		121,222
9*1000		300		153,134
9*1200		370		191,406
7.2*200 R	7.2	50	Riapribile	20,114

- CERTIFICAZIONI -

Fascette in Nylon P66 con bordi arrotondati

Testa e dente ad alta resistenza alla trazione

Estremità ricurva per inserimento facilitato

Temperatura di lavoro -30 / +70 °C

Assorbimento umidità 2,5%

Disponibili in colore Nero o Bianco

Classe Autoestinguenza = UL94 V2

